

02

**SCOUT
SERIES**





LIGHTS
THAT
CHANGE

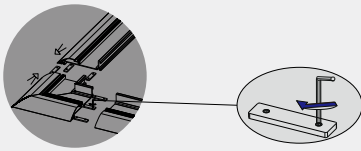
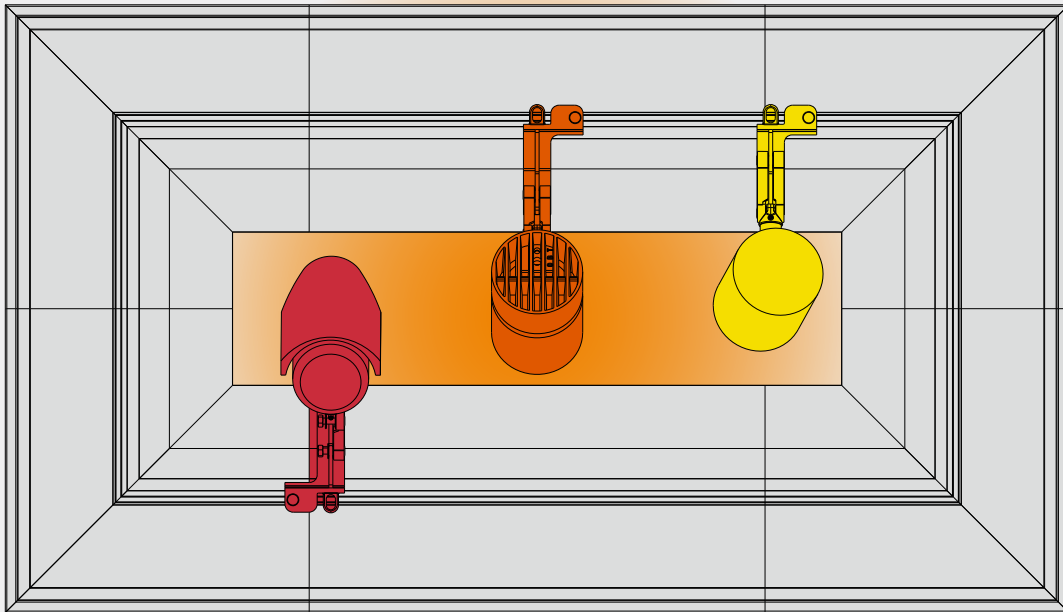
EVERYTHING



SCOUT TRACK

SLOTTING AND FIXING DIAGRAM

Top view



- SPORT LIGHT
- MONITOR
- HORN

Fig A

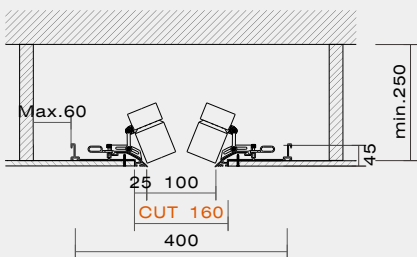


Fig B

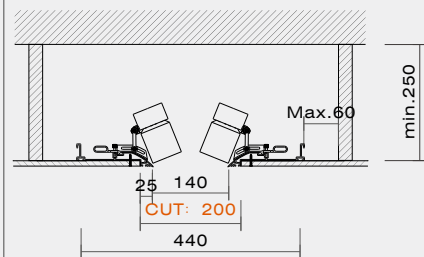
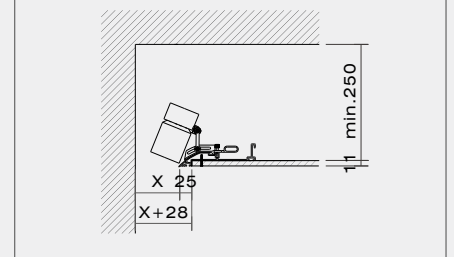
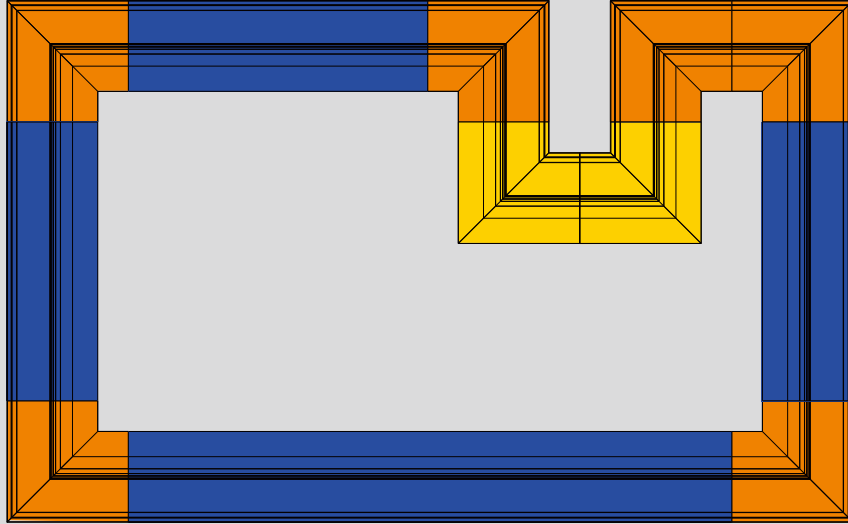


Fig C

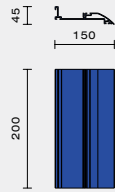
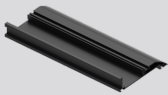


SCOUT CONFIGURATION

PROFILE AND CORNER SPECIFICATIONS



Profile Specification



TRACK LENGTH

1000mm
1000mm
2000mm

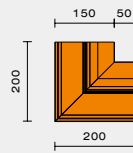
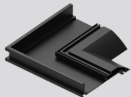
White

24.0500.WH
24.1000.WH
24.2000.WH

Black

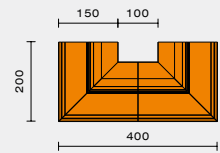
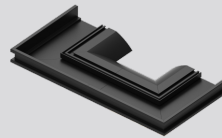
24.0500.BK
24.1000.BK
24.2000.BK

90° Inner Corner Specification



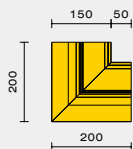
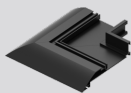
24.00B0.BK

Double Inner Corner Specifications



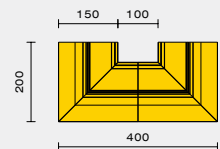
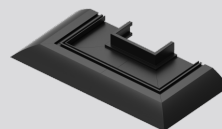
24.00D0.BK

90° Outer Corner Specification



24.00C0.BK










Double Outer Corner Specifications

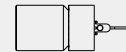
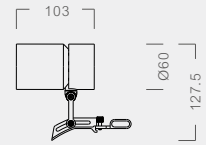


24.00E0.BK

Scout

Track Mounted Luminaire

-  Ceiling Track
-  AC 220V~240V
-  Ra 95
-  Reflector
-  Class II
-  0°~90°
-  0°~355°
-  White (WH)
-  Black (BK)



Wattage	Beam Angle	2700K	3000K	4000K
Max. 15W	15°	20.6001.WH 20.6001.BK	20.6002.WH 20.6002.BK	20.6003.WH 20.6003.BK
	24°	20.6004.WH 20.6004.WH	20.6005.WH 20.6005.BK	20.6006.WH 20.6006.BK
	36°	20.6007.WH 20.6007.BK	20.6008.WH 20.6008.BK	20.6009.WH 20.6009.BK

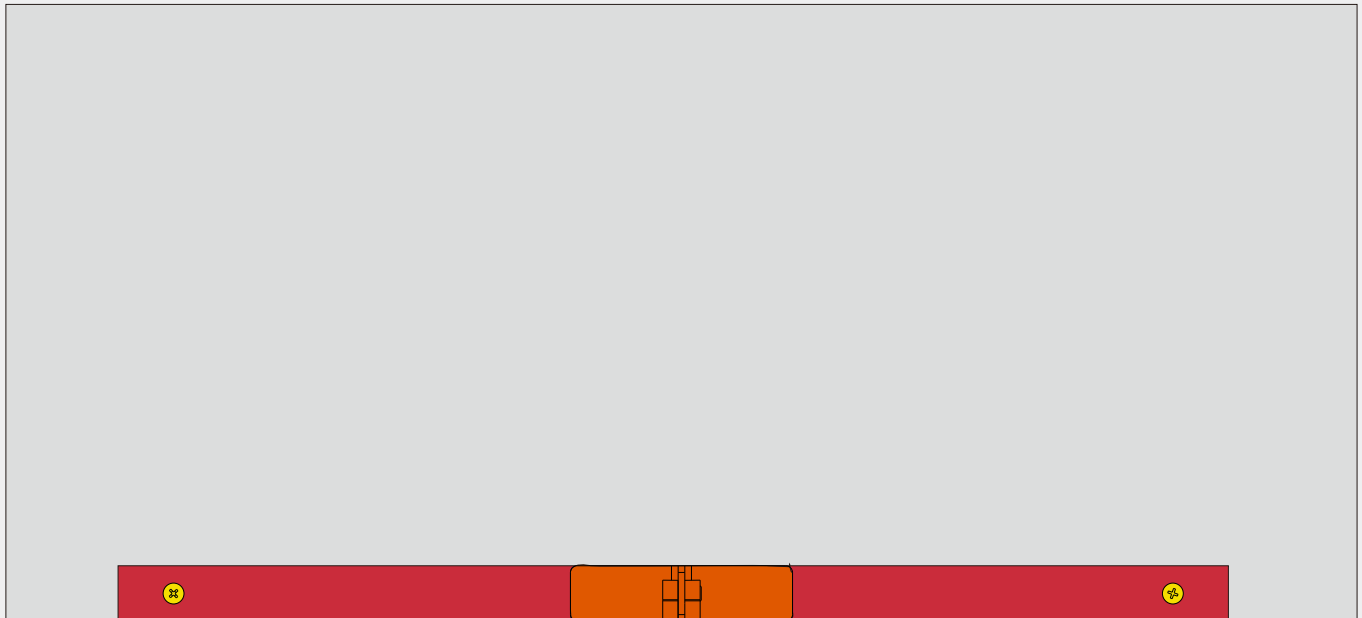
Dimming: On/Off, 1-10V, DALI
 UGR: ≤15
 SDCM: ≤3
 Luminous efficacy: 80lm/W
 luminaire Lifetime: 50000h (L80B50, T a25° C)
 Material: Aluminium
 Working Temperature (°C): -20° C ~ +45° C
 Transformer availability: LED DC 36V 350mA



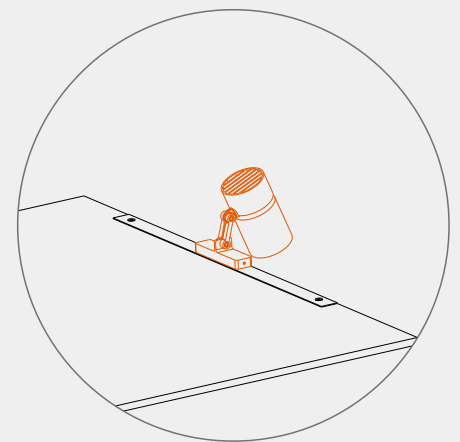
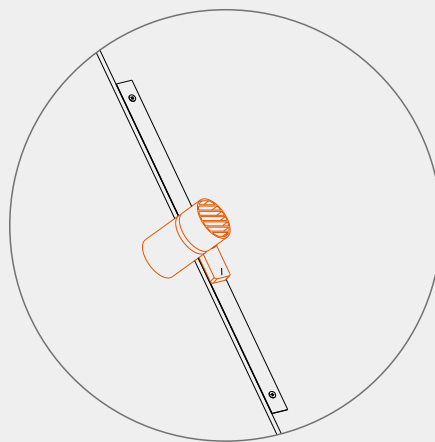
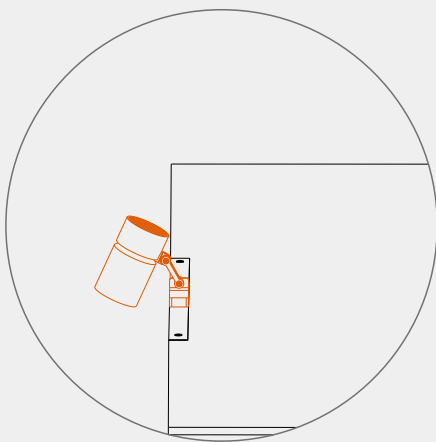
SCOUT TRACK

SLOTING AND FIXING DIAGRAM

Top view












- CEILING
- SPORT LIGHT
- IRON SHEET
- SCREW

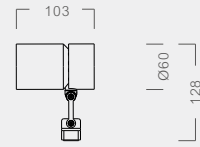


After fixing the iron sheet, the magnetic suction lamp is installed on the iron sheet.

Scout

Track Mounted Luminaire

-  Ceiling Track
-  AC 220V~240V
-  Ra 95
-  Reflector
-  Class II
-  0°~90°
-  0°~355°
-  White (WH)
-  Black (BK)



Wattage	Beam Angle	2700K	3000K	4000K
Max. 15W	15°	20.6010.WH 20.6010.BK	20.6011.WH 20.6011.BK	20.6012.WH 20.6012.BK
	24°	20.6013.WH 20.6013.BK	20.6014.WH 20.6014.BK	20.6015.WH 20.6015.BK
	36°	20.6016.WH 20.6016.BK	20.6017.WH 20.6017.BK	20.6018.WH 20.6018.BK

Dimming: On/Off, 1-10V, DALI
 UGR: ≤15
 SDCM: ≤3
 Luminous efficacy: 80lm/W
 luminaire Lifetime: 50000h (L80B50, T a25° C)
 Material: Aluminium
 Working Temperature (°C): -20° C ~ +45° C
 Transformer availability: LED DC 36V 350mA





OBTLIGHTING LIMITED

Unit G1 Capital House 61
Amhurst Road, London,
United Kingdom, E8 1LL
services@obtlighting.cn
Hotline : 400 090 2289

www.obt.ltd



Floor 2, No. 979, Yunhan
Road, Lingang New District,
China (Shanghai) pilot Free
Trade Zone
services@obtlighting.cn
Hotline : 400 090 2289

www.obt.ltd

Office 5, 8/F, Mega Cube,
8 Wang Kwong Road, Kowloon
Bay, Kowloon, Hong Kong
services@obtlighting.cn
Hotline : 400 090 2289

www.obt.ltd