
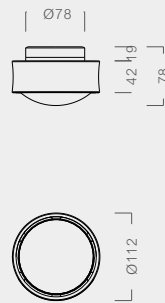
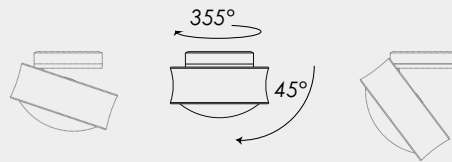
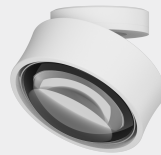




# Lens

Adjustable Surface Mounted Downlight

-  Ceiling luminaires
-  AC 220V~240V
-  Ra 95
-  Lens
-  Class II
-  Ø 50 mm
-  0°~45°
-  0°~355°
-  White (WH)
-  Chrome (CH)



Wattage	Beam Angle	2700K	3000K	4000K	2700~6500K
Max. 20W	 40°	52.5001.WH 52.5001.CH	52.5002.WH 52.5002.CH	52.5003.WH 52.5003.CH	52.5013.WH 52.5013.CH
	 80°	52.5004.WH 52.5004.CH	52.5005.WH 52.5005.CH	52.5006.WH 52.5006.CH	52.5014.WH 52.5014.CH

Dimming: On/Off, 1-10V, DALI, TRIAC  
 UGR: ≤15  
 SDCM: ≤3  
 Luminous efficacy: 85lm/W  
 luminaire Lifetime: 50000h ( L80B50, T a25° C )  
 Material: Aluminium  
 Working Temperature ( °C): -20° C ~ +45° C  
 Transformer availability: LED DC 36V 500mA

